

# **Goa University**

## **Department of Women's Studies**



State Resource Centre for Women- Goa

## **ACTIVITY/ PROGRAMME REPORT**

### **(APRIL – NOVEMBER 2019)**



## **Contact Information**

Official Address:

Department of Women's Studies, Faculty Block B,  
Goa University,  
Taleigao Plateau, Goa- India 403206

Email/Phone: [hodws@unigoa.ac.in](mailto:hodws@unigoa.ac.in) 8669609328/165

## **Staff Employed under SRCW-Goa**

- a. State Project Coordinator: Asawari Nayak
- b. Specialist Gender: Kimberley Dias
- c. Specialist Training: As'ad Shah
- d. Research Officer: Aditi Naik
- e. Assistant (Training and Documentation): Dimpal Malviya

## **Table of Contents**

1. Compilation of Schemes for Women in Goa.....	1
2. Preparation of Status Reports- Sakhi: One Stop Centre Scheme.....	2
3. Preparation of Status Reports- Working Women's Hostel Scheme .....	4
4. Report on: 'Social Mapping of Women in North Goa'.....	6
5. Report on: 'Situational Analysis of Women in Goa' .....	8
6. Training on: 'Gender, Work And Development' in Collaboration With V.V. Giri National Labour Institute .....	11
7. Training on: 'Legal and Psychological Aspects Related to Domestic Violence' for 181 Helpline Counsellors.....	12
8. MSK One Day National Training Programme for SRCW Consultants and Nodal Officers .....	14
9. Source-Destination Consultation on Human Trafficking for Commercial Sexual Exploitation.....	16
10. One Day Teacher's Training Program on 'Building Gender Sensitivity in Schools' ..	18
11. Purple Campaign for Gender Equality at Goa College of Home Science .....	19

# **I. COMPILATION OF SCHEMES FOR WOMEN IN GOA**

## **CATEGORY: RESEARCH AND DOCUMENTATION**

### **1. OBJECTIVES:**

- 1) To document schemes, services, programmes, facilities available for women and girl children in Goa across sectors; including both Central and State Schemes
- 2) To create IEC material for dissemination within the state.
- 3) To create resource material for service providers

### **2. TARGET ACHIEVED:**

A preliminary documentation including information on details of the scheme and contact persons, eligibility,, procedures to avail has been tabulated to be converted into IEC material and compiled on the National Repository of Information for Women (NARI). A total of 22 Government schemes for women in Goa were compiled. Furthermore, schemes were also organized along themes and 9 educational schemes, 5 health-related schemes, 6 schemes related to violence against women, 3 online schemes and 2 special provisions form women under important acts were recorded. Details of 19 NGOs providing services for women in Goa were also documented.

### **3. RECOMMENDATIONS AND STEPS AHEAD:**

- Reaching out to service providers to enquire about more schemes, programmes, services in their organisations as areas such as employment and skill building, banking and loan services, etc. has not been currently covered.
- Creation of directory and IEC material for distribution.

### **4. RELEVANCE OF ACTIVITY WITH ROLE OF SRCW WITHIN MSK:**

- To contribute to the National Repository of Information in the Realm of Women's Empowerment
- To support the implementation of Schemes
- To empower women and services providers through awareness generation

## **II. PREPARATION OF STATUS REPORTS- SAKHI: ONE STOP CENTRE SCHEME**

### **CATEGORY: RESEARCH AND DOCUMENTATION**



#### **1. SAKHI: ONE STOP CENTRE:**

In April 2019, SRCW Staff visited the Sakhi:OSC in North Goa and interacted with the coordinator and staff.

A brief report on the functioning of the scheme including the staff employed, cases undertaken, monitoring mechanisms and implementation issues was prepared.

#### **2. STATUS REPORT OF ONE STOP CENTRE- NORTH GOA:**

- The North Goa OSC has been functional since 2015-16 and is implemented by the NGO SCAN India under Adv. Emidio Pinho. It is located on the campus of Goa Medical College.
- The present setup is a temporary arrangement in the wing allocated for Victim Assistance Unit at GMC. The permanent facility is yet to be set up.
- The Centre receives an average of 20-25 cases a month ranging from physical & verbal abuse, kidnapping, children witnessing murders, trafficking cases, Domestic Violence cases and Sexual Harassment cases.
- The NGO has appointed a team of 5 professionals to work for the centre.
- Several concerns such as the release of funds, lack of regular monitoring, etc. arose from the report

#### **3. STATUS REPORT OF ONE STOP CENTRE- SOUTH GOA**

- The Ministry of Women and Child Development has approved One

Stop Centre for South Goa district, and the Department of Women and Child Development, Goa has identified Bailancho Ekvott, an NGO to implement it.

- Junta Quarters, Pajifond Goa will be the temporary location for South Goa OSC; the permanent location would be within the Pediatric Ward of the new Hospicio Hospital, Fatorda.
- The procedures for obtaining necessary permissions are underway at the Collectorate (Nodal Agency) and the centre is expected to be fully functional by the end of 2019.

#### **4. RELEVANCE OF ACTIVITY WITH ROLE OF SRCW WITHIN MSK:**

- To regularly evaluate and review existing schemes and policies and bring suitable recommendations
- To undertake measures to facilitate effectiveness of scheme
- To regularly report status of implementations and best practices within Govt., PRI and civil society organisations

### **III. PREPARATION OF STATUS REPORTS- WORKING WOMEN'S HOSTEL SCHEME**

#### **CATEGORY: RESEARCH AND DOCUMENTATION**



#### **1. WORKING WOMEN'S HOSTEL SCHEME:**

SRCW Goa prepared an evaluation report on the implementation of the Working Women's Hostel Scheme in Goa as the low participation of women in the paid work force remains an area of concern for the state.

A preliminary enquiry into the status of the Scheme in Goa revealed that there were no beneficiaries of this scheme in the state. SRCW- Goa hence proceeded to look into the hostel facilities currently available for working women in Goa (including private hostels), to assess the need for and awareness about the Working Women's Hostel Scheme.

#### **2. METHOD OF STUDY:**

Using triangulation technique, the following hostels from North and South Goa were located and visited between 2<sup>nd</sup> to 15<sup>th</sup> April, 2019:

North Goa:

- a) AIWC Working Women's Hostel: Porvorim, Goa;
- b) Holy Cross Ladies Hostel: Khorlim, Goa; c) Sevilha Sousa Girls Hostel: Mapusa, Goa; d) Lar Santa Maria Goretti: Fontainhas-Altinho, Goa

South Goa:

- a) Aashray Hostel and Paying Guest: Aquem, Goa;
- b) Casa de Raquel Hostel of Religious Mary Immaculate: Navelim, Goa c) Lupin Pharmaceuticals Hostel: Verna, Goa

#### **3. IMPORTANT FINDINGS:**

The findings highlighted various ground realities related to implementation of the scheme and hinted that awareness generation regarding the scheme is required among individuals/ organizations running hostel facilities for women. It also suggested that a need assessment study looking at working women's requirements of hostels/boarding facilities in Goa could be beneficial. Introductions of standardised procedures for the reporting, registration, and inspection of hostels/boarding facilities available for women was also suggested by the report.

#### **4. RELEVANCE OF ACTIVITY WITH ROLE OF SRCW WITHIN MSK:**

- To record best practices and challenges, document initiatives to disseminate within the state.
- To take steps aimed at initiating implementation of important schemes.
- Develop partnership models with private sector and civil society organisations to promote women's empowerment.



## **IV. REPORT ON: 'SOCIAL MAPPING OF WOMEN IN NORTH GOA'**

### **CATEGORY: RESEARCH AND DOCUMENTATION**

#### **1. RATIONALE AND OBJECTIVES:**

Following SRCW- Goa Symposium on 'Working with Women in Goa' on 8-10-18, and the Inter- Sectoral Consultation meeting on 'Position and Role of Women in Goa' on 11-1-2019, field work on state-wide research study on 'Social Mapping of Women' was completed in March 2019 to:

1. Understand women-centric issues in the state, focusing on issues concerning rural and marginalized women
2. Identify and prioritise areas for further research and intervention
3. Bridge the gaps in research on women in Goa

A report on the same was prepared in May 2019.

#### **2. FOCUS AREA FOR PHASE I:**

The first phase of this research focussed on North-Goa: 5 villages were selected, from each of the five talukas of North Goa using purposive sampling:

- Morjim from Pernem Taluka (8 February 2019)
- Chimbél, Tiswadi Taluka (12 February 2019)
- Calangute, Bardez Taluka (14 February 2019)
- Dhangarwaddo, Bhuipal, Sattari Taluka (22 February 2019)
- Maulinguem, Bicholim Taluka (28 February 2019)

#### **3. VARIABLES:**

- Health, education, employment status of women and safety;
- Violence and discrimination;
- Awareness and access to schemes.

#### **4. METHODOLOGY:**

Social mapping method enables the holistic presentation of social institutions and socio-economic status of a community/region; to highlight house-hold differences and similarities based on social factors.

Several tools of collecting data were used to collect information of the variables concerning women's issues using an intersectional focus:

- Focus Group Discussions,
- Participatory Observation Method,
- In-depth Semi-Structured Interviews and

- Case Study Method.

## 5. SAMPLE COMPOSITION:

A total of 123 women participated in the study, out of which 109 women revealed their caste. 55 women belonged to General category, 43 from OBC category, 9 from ST and 1 from SC category.

## 6. RECOMMENDATIONS AND STEPS AHEAD:

- The findings highlighted large gaps in awareness and access to Government Schemes for women. Except for 2-3 popular state schemes, the women did not have knowledge on the existence and procedures to avail of schemes. Interventions such as awareness programmes, preparation and dissemination of IEC materials, etc. need to be designed to bridge these gaps.
- The study also showed that informative programmes on health and sanitation and skill-building training programmes for women's empowerment would prove beneficial
- The second phase of the study will be held in South Goa.

## 7. RELEVANCE OF ACTIVITY WITH ROLE OF SRCW WITHIN MSK:

- To mainstream intersectional issues affecting women through research; focusing on rural and marginalized sections
- To make suitable and evidence-based recommendations to the Govt
- To initiate activities to identify factors in design, process and delivery of schemes/ legislations at the grass-root level



## **V. REPORT ON: 'SITUATIONAL ANALYSIS OF WOMEN IN GOA'**

### **CATEGORY: RESEARCH AND DOCUMENTATION**

#### **1. RATIONALE AND OBJECTIVES:**

The first edition of the 'Situational Analysis of Women in Goa' report was prepared by the Department of Women's Studies, Goa University for the National Commission for Women- New Delhi in 2003 and presented a comprehensive gender profile for the state.

Since this report remains an important and unprecedented work for the state, SRCW-Goa has taken up the task to update this report. Since June 2019, research and documentation on the following topics has been taking place: women's educational status, economic status of women, gender critique of development, women and law, violence and women in Goa, among others. This activity will continue in subsequent months.

#### **2. METHODOLOGY:**

The research uses secondary data sources bringing together cross-sectional data from official reports, such as NSSO, Economic Survey - Govt. of Goa, NITI Aayog, ILO, among others; with inputs and data gathered by civil society organisations and stakeholders working for women in Goa like ARZ and Bailancho Saad. Relevant research papers regarding status of women in Goa were also reviewed.

#### **3. FINDINGS AND IMPLICATIONS OF THE REPORT:**

- The report may be used by researchers, students, developmental professionals, government officials, activists to get a broad understanding of issues surrounding the rights (or the status) of women in Goa.
- The findings highlight important areas for interventions ranging from declining sex ratio, negative impacts of unregulated tourism, lack of gender mainstreaming in developmental policies, low participation of women in paid workforce, political and decision making bodies, increase in incidents of violence against women, human trafficking for commercial sexual exploitation, and presents an analysis of the civil laws in Goa.
- In the subsequent phases the following variables will be looked at: women's health and political participation.

#### **4. RELEVANCE OF ACTIVITY WITH ROLE OF SRCW WITHIN MSK:**

- Gender mainstreaming of issues affecting women across sectors- health, education, employment, etc.
- To conduct research and documentation to guide Govt. policy on women.

## **VI. PAPER PRESENTATION AT NATIONAL SOCIOLOGY CONFERENCE- KARNATAK UNIVERSITY, DHARWAD**

### **CATEGORY: RESEARCH AND DOCUMENTATION**

#### **1. 'TRIBAL SOCIETY AND WOMEN- AN ETHNOGRAPHIC STUDY OF CHIMBEL IN NORTH GOA':**

The Research Officer- SRCW Goa- Ms. Aditi Naik presented a research paper at XIII National Sociology Conference on 'Science Technology and Society: Responses, Reflections and Responsibilities' held at Karnataka University, Dharwad on 'Tribal Society and Women: An Ethnographic Study of Chimbel in North Goa' on 13th and 14th of September, 2019



#### **2. ABSTRACT OF APPER PRESENTED:**

Chimbel in North Goa is a village inhabited by people who belong to the marginal groups belonging to the Gauda (a Scheduled Tribe) Community. This paper is about the tribal society and traditional health practices among women of Goa in general, and Chimbel North Goa in particular. Developmental interventions to increase tribal people's access to health is an area of major concern for Goa. Most of the tribal women in Goa are deprived of their fundamental rights and face discrimination, violence, gender inequality as well as disparities on health grounds; which is also a threat to the identity of women in '*Nava Gauda*'- an ethnic community in Goa.

Through an ethnographic orientation, the author first identifies the traditional health practices among the women of *Nava Gauda* community in Chimbel. After describing the traditional health practices, she discusses aspects of hygiene and need of technological development in the field of health among the tribal group. The paper recognises gender discrimination as a social reality in Goa and its negative impact on the customs and livelihood of women in tribal community, and also on the health of women. The paper concludes with a discussion on the

prospects on improving health of tribal women with scientific and technological advancement in Goa in general, and in Chimbhel in particular.

**3. RELEVANCE OF ACTIVITY WITH ROLE OF SRCW WITHIN MSK:**

To undertake research on intersectional issues affecting women from marginalised sections aimed at mainstreaming, to identify problems faced by them while accessing important schemes/ services.

## **VII. TRAINING ON: 'GENDER, WORK AND DEVELOPMENT' IN COLLABORATION WITH V.V. GIRI NATIONAL LABOUR INSTITUTE**

### **CATEGORY: TRAINING AND CAPACITY BUILDING**

#### **1. OBJECTIVES:**

1. To develop a conceptual understanding about gender, work and development and its linkages.

2. To familiarize the participants with gender differentiation in accessing education, skills, wages, social protection, welfare measures and initiatives to address the issues.

3. To empower participants to contribute in their academic and professional work by sensitising them against gender discrimination; acquainting them with gender

sensitive policies/ laws/ programmes for gender equality, equity; agency building of women; inclusive growth and sustainable development.



#### **2. TARGET AUDIANCE:**

The programme was designed for students/ scholars (undergraduate, postgraduate, MPhil, PhD); developmental professionals, Govt. servants. and practitioners working on women's issues. 36 participants (29 female and 7 males), along with 5 SRCW members attended the training.

#### **3. PEDAGOGY:**

Lecture, Audio Visual Presentations, Group Presentations, Discussions, General Discussion, Field Visit.

#### **4. RELEVANCE OF ACTIVITY WITH ROLE OF SRCW WITHIN MSK:**

- To create and carry out training and capacity building programmes to meet practical and strategic needs of women.
- To enable greater understanding of inter-sectoral needs affecting women.



## **VIII. TRAINING ON: 'LEGAL AND PSYCHOLOGICAL ASPECTS RELATED TO DOMESTIC VIOLENCE' FOR 181 HELPLINE COUNSELLORS**

### **CATEGORY: TRAINING AND CAPACITY BUILDING**

#### **1. OBJECTIVES:**

1. Introduce the Protection of Women from Domestic Violence Act (2005) to the participants and to discuss its scope, procedure and reliefs/ redressal mechanism.
2. To raise awareness about the socio-psychological aspects of domestic violence and discuss various relevant psychotherapies relevant to assist Women in Distress (WID).
3. To enable the 181 Counsellors to problem solve and develop appropriate strategies while assisting WID either telephonically or through on-site visits.



#### **2. DATES AND VENUE:**

29-5-19; 181 Helpline Office, Bambolim-Goa

#### **3. RESOURCE PERSONS:**

- Adv. Caroline Collasso (Lawyer and Goa State Representative of the Human Rights Law Network)
- Mrs. Olga Netto (Psychologist)

#### **4. TARGET AUDIANCE:**

Counsellors working the 181 Women's Helpline

#### **5. PEDAGOGY :**

Lecturers, power point presentations and participatory pedagogies such as discussion, case study etc.

#### **6. RECOMMENDATIONS AND STEPS AHEAD:**

- Organise regular programmes on legal awareness for 181 Counsellors.
- Initiate Convergence with similar schemes such as : Sakhi- One Stop Centre
- Assist the 181 Helpline Scheme through documenting a glossary of services available for women: eg, shelter homes, mediation centres, etc

## **7. RELEVANCE OF ACTIVITY WITH ROLE OF SRCW WITHIN MSK:**

- To develop and implement gender sensitive training and capacity building modules
- To undertake measure to improve the functioning of women-centric schemes and programmes
- To make suitable recommendations to the government and private organisations providing services to women



## **IX. MSK ONE DAY NATIONAL TRAINING PROGRAMME FOR SRCW CONSULTANTS AND NODAL OFFICERS**

### **CATEGORY: TRAINING AND CAPACITY BUILDING**

#### **1. INTRODUCTION AND OBJECTIVES:**

The training programme was organised by Mahila Shakti Kendra Scheme team from Ministry of Women and Child Development and was attended by SRCW consultants, nodal officers and representatives from Department of Women and Child Developments of Indian States where MSK is approved. From the state of Goa, Deputy Director (DWCD)- Mr. Pravin Parab and the State Project Coordinator of SRCW - Ms. Asawari Nayak were deputed to attend the training.

The objectives of the training were:

1. To enable an understanding of objectives, structure and components of the MSK Scheme (State Resource Centre for Women, District Level Centre for Women, MSK Block Level and BBBP PMU) .
2. To train consultants on preparation of Utilisation Certificate and Statement of Expenditure.
3. To explain SRCW's role as Project Management Unit of BBBP Scheme
4. To foster exchange challenges in implementation, achievements and best practices among states

#### **2. DATES AND VENUE:**

1st August, 2019 Vigyan Bhavan-  
New Delhi

#### **3. RESOURCE PERSONS:**

Additional Secretary and Joint Secretary (MWCD), Director, School of Gender and Development. Studies, IIGNOU. MSK and BBBP Central Consultants



#### **4. STATUS UPDATES FOR MSK GOA:**

- SRCW Goa was appreciated for successfully carrying out several activities in the first few years of implementation, however, the MSK senior consultants gave the following directions:
- DWCD to submit UC/SOE to Ministry of Women & Child Development. for FY 2018-19 at the earliest

- Accelerate formation of DLCW in both districts
- SRCW-Goa to start functioning as PMU for BBBP Scheme and funding for the same (in 60:40 Central: State ratio) should be released by DWCD to implementation agency
- Enable better coordination with DWCD



##### **5. RELEVANCE OF ACTIVITY WITH ROLE OF SRCW WITHIN MSK:**

- Systematic imparting of skills through formal training aiming at increasing efficiency and innovation in systems
- To enable greater understanding of structure, functions and components of the MSK scheme and uniform procedures of UC/SOE

## **X. SOURCE-DESTINATION CONSULTATION ON HUMAN TRAFFICKING FOR COMMERCIAL SEXUAL EXPLOITATION**

### **CATEGORY: CONSULTATION/ TRAINING AND CAPACITY BUILDING**

#### **1. INTRODUCTION AND OBJECTIVES:**

The Department of Women and Child Development, Govt. of Goa in collaboration with ARZ (Anyay Rahit Zindagi), Nodal NGO Anti Human Trafficking Unit- Goa organised a 'Source-Destination Consultation' on Human Trafficking for Combatting Commercial Sexual Exploitation in Goa. ECPAT-



Luxembourg, an international Organisation working on this issue in South Asian Countries also supported this consultation. Report on 'Trafficking of Women and Children for Commercial Sexual Exploitation in Goa: A Statistical Analysis' compiled by ARZ was also released. SRCW members were invited as consultants by DWCD.

The objective was to enable an exchange between law enforcement agencies, service providers and civil societies in Goa working on issues related to commercial sexual exploitation. As Goa is a destination state for trafficking the consultation hoped to enable an exchange between stakeholders from three main source states- Maharashtra, Delhi (NCR) and West Bengal and Source Countries- Nepal and Bangladesh

#### **2. DATE AND VENUE:**

17th and 18th September, 2019; International Centre Goa

#### **3. ATTENDED BY:**

State Project Coordinator, Specialist Gender and Research Officer- SRCW Goa

#### **4. IMPORTANT POINTS RAISED:**

- The form of Commercial Sexual Exploitation has changed in Goa- it has become more organised and moved from 'public' to 'private' spheres- hotels, private residents, etc. There is also an upsurge in usage of internet/online services for commercial sexual activities which make the perpetrators 'faceless', posing a problem for service providers.
- The source states of trafficking have also changed for Goa- while there is reduction of women trafficked from North East states of India; Maharashtra, West Bengal and Delhi have

emerged as new players.

- While Goa has several good initiatives providing rehabilitation and psycho-social support to victims, the discontinuation of these services during repatriation causes re-trafficking,
- Need to create awareness, increased coordination and convergence between institutions (both public and civil society) within states and between source and destination states/countries was highlighted.

#### **5.RELEVANCE OF ACTIVITY WITH ROLE OF SRCW WITHIN MSK:**

- To identify best practices from a gender perspective, document initiatives and identify challenges in implementation and convergence of schemes
- To develop partnership models with Government, Civil Society and Private Sector organisations for initiating activities that promote women's empowerment

## **XI. ONE DAY TEACHER'S TRAINING PROGRAM ON 'BUILDING GENDER SENSITIVITY IN SCHOOLS'**

**CATEGORY: BBBP PM U: TRAINING, CAPACITY BUILDING, ORIENTATION  
AND SENSITIZATION**

### **1. RATIONALE:**

1. To inculcate a conceptual understanding on the subject of gender and sex
2. To assist teachers in creating an equitable classroom environment
3. To mainstream gender issues and its relevance into the school curriculum.



### **2. TARGET AUDIANCE :**

High School Teachers and students who want to consider a career in teaching/ education.

### **3. PEDAGOGY :**

Lecture, Audio Visual Presentations, Discussions, General Discussion,

### **4. RESOURCE PERSONS AND TOPICS:**



1. Dr. Nishtha Desai.  
Assistant Professor, Goa University-  
'Prevalence of Child Abuse and the Law'

2. Dr. Mamta Kumari,  
Assistant Professor, Goa University-  
'Institutionalizing Patriarchy in Schools:  
an Overview'.

3. Ms. Asawari Nayak, State  
Project Coordinator, SRCW- 'Different

facets of Gender Discrimination & Gender Stereotypes existing in Schools'

4. Ms. Sujata Noronha, founding trustee and educator at Bookworm Trust- 'Alternative Pedagogies for Gender Mainstreaming'

### **5. DATES AND VENUE :**

6th August 2019; Goa University

### **6. RELEVANCE OF ACTIVITY WITH ROLE OF SRCW AS PMU BBBP:**

- To undertake innovative activities at state level to draw attention to giving equal value to



the girl child

- To ensure that state specific issues related to education and safety of girl child are addressed in a systematic manner



## **XII. PURPLE CAMPAIGN FOR GENDER EQUALITY AT GOA COLLEGE OF HOME SCIENCE**

**CATEGORY: BBBP PMU: TRAINING, CAPACITY BUILDING, ORIENTATION AND SENSITIZATION**

### **1. RATIONALE:**



The Purple Campaign is a regular event of the Dept. of Women's Studies, Goa University wherein issues related to gender equality are introduced to undergraduate students of different colleges of Goa using games, quizzes and interactive lectures. Over the past few years, the Department has organised

many campaigns in collaboration with colleges in Goa. SRCW team was involved in the Purple Campaign as the objectives aligned with BBBP Campaign themes related to gender sensitisation, education and safety of girl children.

### **2. DATES AND VENUE:**

24th August, 2019 2019, Goa College of Home Science, Panaji Goa

### **3. TARGET AUDIANCE:**

College students and teachers

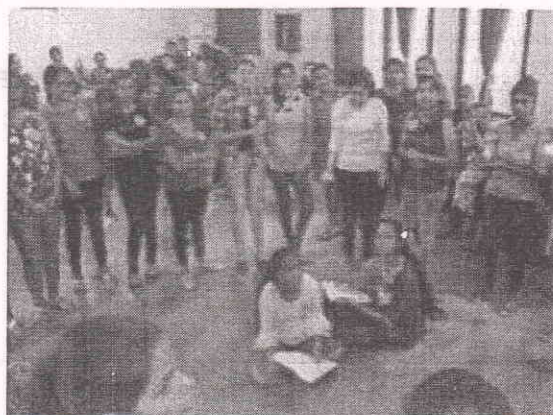
### **4. THEMES:**

The Students were introduced to various topics such as gender discrimination, stereotyping, gender roles, gender in media and gendered analysis of education



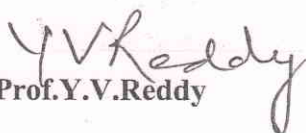
**5. RELEVANCE OF ACTIVITY WITH  
ROLE OF SRCW WITHIN MSK:**

- To conduct training, sensitization and innovation and awareness generation activities on issues affecting the girl child
- To identify constraints to girls' education and encourage participation of female students in educational institutions



**Document:**

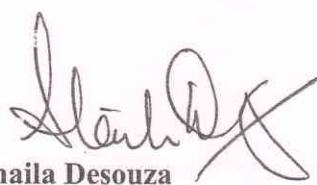
**1. Utilization Certificate**

  
Prof. Y.V. Reddy

**Registrar**

Date: 11<sup>th</sup> NOV 2019

(Seal) **REGISTRAR**  
**Goa University**  
**Taleigao Plateau-Goa.**

  
Prof. Shaila Desouza

**(Head, Dept. of Women's Studies)**

Date: 11 NOV. 2019

(Seal)

